

Race Application EC 1/12 - 2017



Proposed date
31 march till 2 april 2017

amchamm
auto-modell-club Hamm e.V.

✓ The track is located in Sittard, Nusterweg 66 6136 XB (Netherlands), directly at the autobahn A2, about 25km east of Maastricht

✓ 6 Airports within 125km

Maastricht, Eindhoven, Düsseldorf, Cologne ,
Weeze , Hannover

➤ Easy accessible from all over Netherlands,
Belgium, Germany and rest of Europe



Location in Europe



- ✓ **25+ Hotels / Bread and Breakfast within 20 min. from the track**
- ✓ **List with special offers will be available at the EC's homepage**
- **3+ Campings within 20 min. from the track**



**Location hotels /
campings**

- ✓ Parking lots for 250+ cars
- ✓ Catering with daily specials
- ✓ Tent for buffet and party
- ✓ (additional)



area plan

Onroad
Track



- ✓ Track was completely rebuilt in august 2016
- ✓ Length 30,0m, Width 14,6m
- ✓ 6 left and 4 right turns
- ✓ Rostrum for 10 till 12 drivers (additional referee stand)



track

Onroad
Track



- ✓ Light flooded Pits for 100 / 120 drivers (additional more possible)
- ✓ 230V wall plug at every single place
- ✓ 2 LCD Screen for race monitoring



✓ Cleaning area with 5kW compressor for Pits tires and cars

Onroad
Track



- ✓ **AMB RC 4 Decoder**
(+ 2nd system for backup)
- ✓ **RCM Ultimate Software**
- ✓ **Onlinestreaming 24/7**
- ✓ **Safetylight control**
- ✓ **Track 100% observable**



Timekeeping

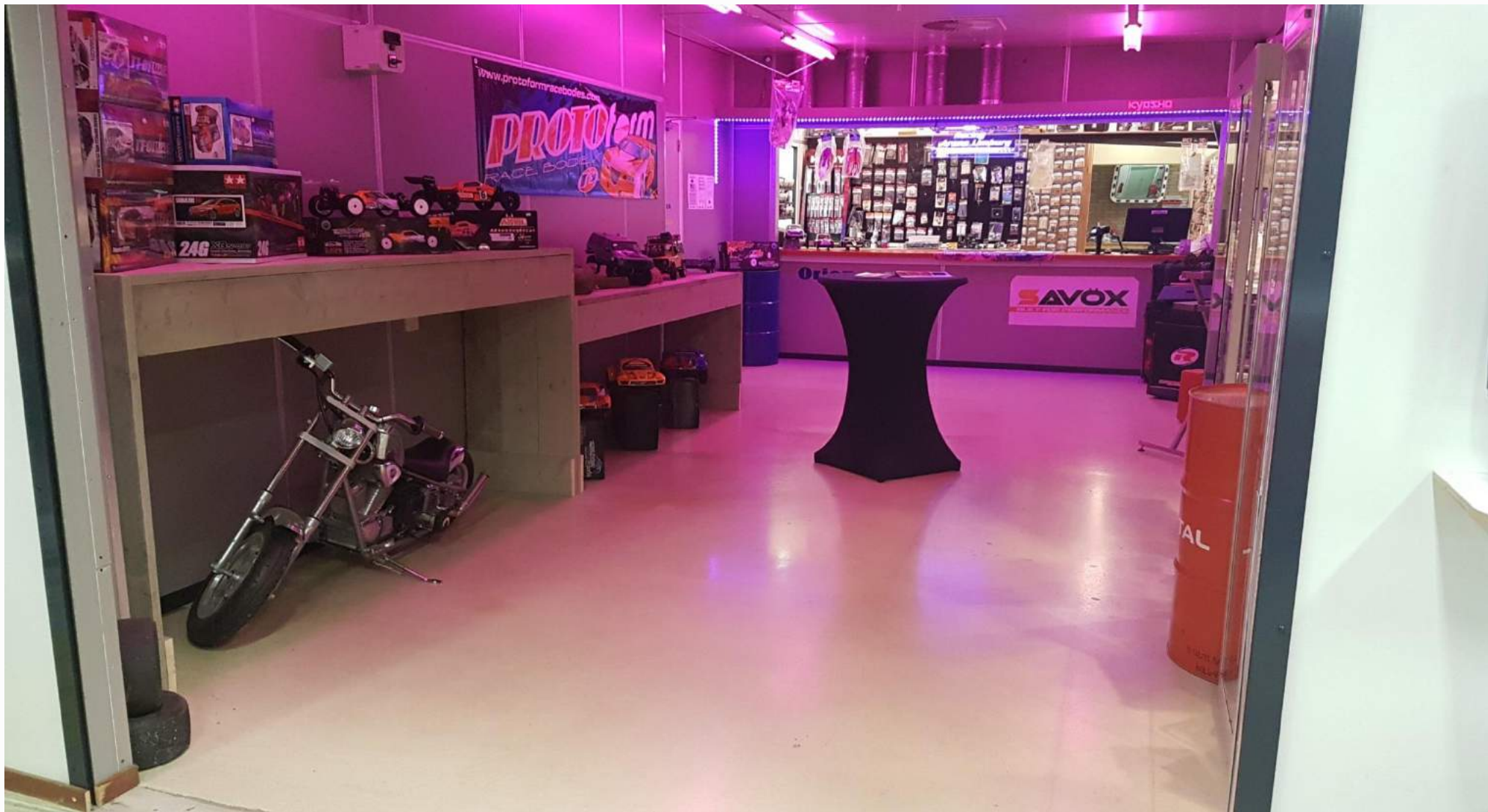
Timekeeping

- ✓ **TOS Germany 2015, 2 times** (4 classes, 65 entries and 49 entries)
- ✓ **Masters of Foam 2015.2** (3 classes, 63 entries)
- ✓ **Tamiya Cup 2015** (4 classes, 78 entries)
- ✓ **Masters of Foam 2016** (3 classes, 100 entries)

Recent events

Recent
Events





Impression

Racing
Arena Limburg
Racing Arena Limburg.nl



impressions

Impression



impressions

Impression



impressions

Impression



impressions

Impression